

Service Rig Crews

Service rig crews are responsible for the safe, efficient operation of the service rig equipment.

There are between 4 and 6 individuals on a rig crew:

The **Rig Manager** is the senior supervisor on site and is in complete charge of the rig. He is responsible to ensure the safety and efficiency of the crew, the equipment and the overall operation. The Rig Manager's direction and leadership keep the operation running smoothly and safely.



An **Operator** also supervises the crew. The Operator reports to the Rig Manager and is responsible to develop a well-trained, reliable and safety-conscious crew.

The **Derrickhand** works above the rig floor on a platform called a tubingboard. From this position the Derrickhand guides lengths of tubing, instruments and tools as they are being raised from or lowered into the well. The Derrickhand also assists in training new and junior crew members.

The **Floorhand** uses the elevators and tongs (equipment on the rig floor) to guide instruments and casing downhole. Often service rig crews have 2 Floorhands. A Floorhand's responsibilities also include equipment maintenance and assisting other crewmembers.

Other people will be on site and involved in the well servicing operation, but these people are not employed by the service rig contractor.

Location and Hours

The most common work schedules are 8 to 12 hour shifts. However, work schedules will vary from contractor to contractor or even from rig to rig!

A typical workday for a service rig crew may be up to 12 hours. A shift includes travel to and from the rig and employees are paid for their travel time. In the service rig industry, employers provide employees with transportation.

Most rigs work in western Canada. Alberta's activity is province-wide. In Saskatchewan, drilling occurs in the central and southern parts of the province, while in B.C., the industry is focused in the northeast. Sometimes, rigs move to the far north or even into eastern Canada.

Occasionally, the rig will work in a remote location, making it difficult to travel to and from the site everyday. In these cases, lodging is provided for the crew.

Industry Courses:
www.enform.ca

Employment with
Service Rig Contractors:
www.caodc.ca

Follow the link "Employment"

in the Service Rig Industry



Canadian Association of Oilwell Drilling Contractors
800, 540 – 5 Avenue S.W., Calgary, AB

Thank you for sharing your photos:
Concord Well Servicing
Roll'n Oilfield Industries, Ltd.

Questions? Comments?

Email: trades@caodc.ca

Discover Your Career on the Service Rigs

Canada's Service Rig Industry

Service rig contractors provide specialized equipment to oil companies. This equipment – and the personnel who operate it – are integral to keeping oil and gas wells in production.

After a drilling rig drills the initial hole for a well, a service rig moves on site. Service rigs have equipment to work "downhole" to prepare the well for production. They also are needed when wellsites require maintenance or modifications.

While drilling rigs only are required to start a well, service rigs will return to a wellsite again and again throughout the entire lifetime of the well.

Service rigs have become increasingly technical and use both computerized and mechanical equipment. The people who understand, maintain and operate this equipment developed a unique skill set learned right on the job site.

These individuals typically move to positions of authority and responsibility. **People in this highly-specialized occupation are the backbone to Canada's petroleum industry.**

A Career to Grow With

In this industry, you learn the job by doing the job. You advance to more senior positions by proving you do your job well and showing you are a team player.

Many senior people in service rig companies started their careers on a service rig. Other oil and gas sectors value this hands-on experience as well. A wide range of career opportunities is open to someone with rig experience.

This industry has developed a competency program to assist employees with their on-the-job training. The Service Rig Competency Program will be used by your employer to help you develop, track and communicate the skills you gain from this work!

Is This Career For You?

A successful applicant will:

- Be physically fit
- Have a strong work ethic
- Be able to travel to remote locations
- Be comfortable working outdoors in all weather conditions

All contractors support healthy workplaces. Most contractors require that you pass a drug test before they will hire you.

You will be working with heavy equipment and a variety of tools. At the beginning of each shift, you will need to be well-rested, fit, and focused!

Getting Started

You do not need much formal training to get started.

You must have:

- H2S Alive (1 day course)
- First Aid
- A valid driver's license (recommended, but not required)



www.enform.ca

Enform is the petroleum industry training school and offers H2S Alive and First Aid courses. Enform also offers Pre-Employment Floorhand Training for Service Rigs. This 5-day course prepares students to work safely on the rig. Enform has rig equipment on site where students can get hands-on experience in a learning environment.



The Required Gear

Because you will be working outside and with heavy equipment, you will need the appropriate gear.

Some contractors will sell you these items at a discounted rate. Everything you require can be purchased from a local Work Warehouse store.

Spring/Summer

- Fire Resistant Summer Coveralls (2 Pairs)
- Rain Gear (non-static and chemical resistant)
- 1 CSA Approved Hard Hat
- Several Pairs of Gloves (Green Kings, Petrochiefs, Liners)
- Changes of work clothes and clothes for travelling home
- CSA Approved Steel Toes Boots

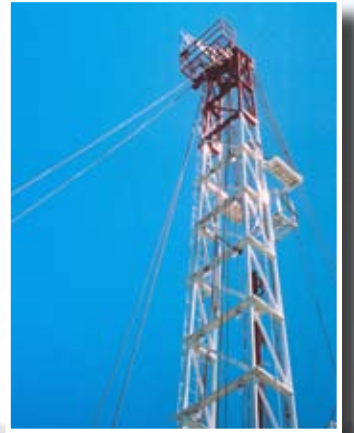


Fall/Winter

All of the Spring/Summer Gear plus:

- Fire Resistant Winter Coveralls (1 Pair)
- Winter Gloves and Glove Liners
- Hard Hat Liner/Toque
- Several Layers of Clothes/Long Underwear

These lists include the basic required items. Individual drilling contractors may require you to have additional gear.



Pride in the Job!

Service rig employees are proud of the job they do and with good reason. It's hard work!

Before getting started, do as much research as possible to decide if this job is a good fit for you.

You will be working up to 12-hour shifts. Breaks are taken when the operation allows for downtime.

You will be expected to remember what needs to be done on a daily basis and to remember the policies and procedures taught to you during your training.

You will be an important member of the team! Getting along with co-workers is a big part of doing the job well!

